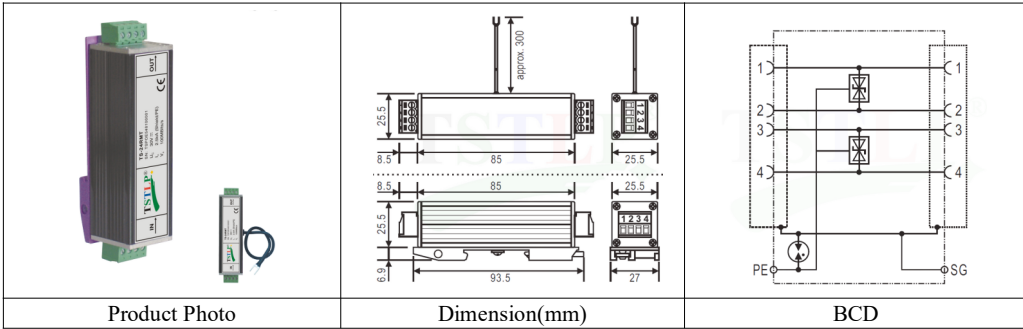




■ **TSTLP®/TS-24RMT Surge Arrester for network equipment**

❖ **INTRODUCTION:** TS-24RMT, with UTP cables interface, designed according to IEC61643-21, GB 18802.21 & YD/T 1542, protects network equipment (switch, router, HUB, modem and so on) from interruption caused by surge current.



❖ **TECHNICAL DATA**

Model	TS-24RMT	
Nominal voltage	Un	24 V-
Rated voltage (max. continuous voltage)	Uc	30Vdc; 21.1Vac;
Lightning impulse current (10/350) (SG-PG)	Iimp	0.5kA
Nominal discharge current (8/20)	In	0.1kA (line-line-PG) 2.5kA (shield-PG)
Max. discharge current (8/20)	Imax	0.2kA (line-line-PG) 5kA (shield-PG)
Voltage protection level at In	Up	≤60V (line-line) ≤60V (line-PG)
Voltage protection level at 1kV/ms	Up	≤ 45V (line-line-PG) ≤ 700V (shield-PG)
Capacitance	C	≤ 35pF (line-line) ≤ 50pF (line-PG)
Response time	tA	≤ 1ns (line-line-PG) ≤ 100ns (shield-PG)
Bandwidth(line-line)	fG	165Mbits/s
Max. data transmission rates	Vs	100Mbits/s
Operating temperature range		-40°C...+80°C
Relative humidity		≤95% (25°C)
Connection (input / output)		RMT connecting terminal
Pining		1/2, 3/6, 4/5, 7/8
Mounting on		Type A: 35mm DIN rail
Earthing		Type A: earthing screw / Type B: outgoing cable 1.5mm2 x 300mm
Shield earthing		Indirectly via integrated spark gap
Standards		IEC 61643-21; GB 18802.21; YD/T 1542
Compliance		CE(LVD,EMC)

❖ **MAIN CHARACTER**

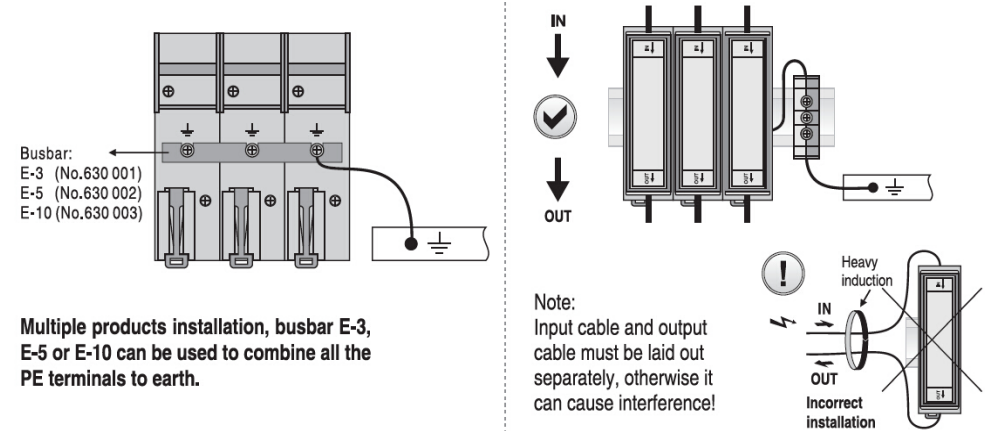
- ✓ For protecting computer data transmission system, network system and so on.
- ✓ Good discharge capacity, low voltage protection level
- ✓ Quick response, high transmission speed, low signal attenuation
- ✓ RM connection terminal, easy for installataion.

INSTALLATION INSTRUCTION

1. This product is connected in series to the protected device.
2. Mount the SPD on 35 mm DIN rail.
3. The out terminal should be connected to the protected devices.
4. SPD's earthing terminal must be connected to nearby earthing BusBar or the metal earthing enclosure of protected device.
5. After above, you should ensure the circuit is functioning.

Regularly inspect the operating status, especially after lightning, once the communication is off, electrician should check/replace the SPD.

TS-24RMT INSTALLATION DIAGRAM



WARNING:

- The device must be installed by electrically skilled person, conforming to national standards and safety regulations.
- It is recommended that installation should be done under power off condition.